

# Kimbrose Club Newsletter Spring 2022



## Kimbrose Closure

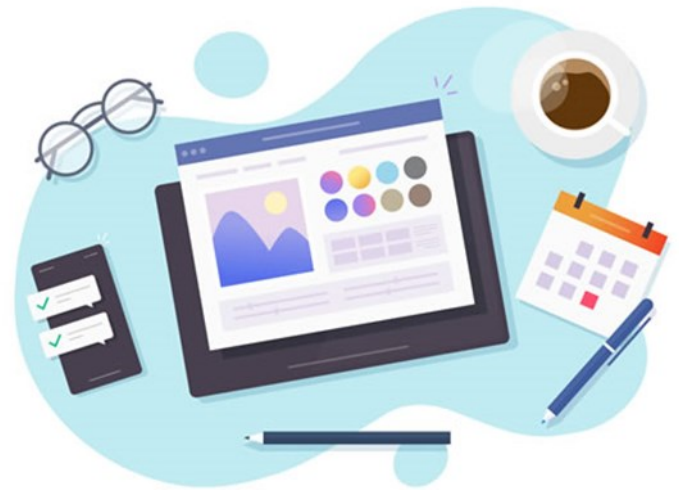


**Kimbrose  
will be closed on  
Wednesday 1<sup>st</sup>,  
Thursday 2<sup>nd</sup> and  
Friday 3<sup>rd</sup> June  
2022**

## IN THIS ISSUE

Editor's Desk.....	2
Kimbrose in Review....	3
10th Anniversary .....	5
Upcoming Events.....	6
Noticeboard.....	7
Wordsearch .....	8

# Editor's Desk



**Hello Club Members,  
Families and Friends**

**Please note when we are closed for the Jubilee celebrations. You will not be charged for these days. You are welcome to choose other dates in June to attend in lieu of any missed sessions.**

**On 29<sup>th</sup> February 2022 it was the 10<sup>th</sup> Anniversary of our opening. They say that time flies when you're enjoying yourself and that could not be more true than at Kimbrose, where we try to make every day as enjoyable as we can for our Members. More about our Anniversary on page 7.**

**Keep safe** *Jane*



## **The Gloucester Charities Trust Garden Party**

**Wednesday 1st June 2022 12 - 3pm**

The Gloucester Charities Trust will be celebrating the Queen's Jubilee with a garden party held in the grounds of St Margarets, London Rd, Gloucester. Although Kimbrose will be closed, our Members are welcome to come along with their family or friends to enjoy the celebrations, music and entertainment. Please let us know if you plan to join us.

# Kimbrose in Review

The end of social distancing means we can enjoy dancing together again. Always a great way to lift spirits and to sneak in some exercise!



In February, Alison, our cook celebrated a special birthday. We gave her theatre tickets and flowers and a cake which she shared with our Members.

We celebrated Chinese New Year, making lots of decorations for the Club.  
2022 is the Year of the Tiger.





Kimbrose Staff were entered in the 'Making a Real Difference' category of a national competition and won a beautiful hamper from Fortnum and Mason.



Getting in the mood for a sing-a-long

.... and Elaine and Ken have fun on St Patrick's Day!





# 10 years



This year will mark the 10<sup>th</sup> year that Kimbrose has been open. Both Sian and Jane have been here since the first day. During this time, they have supported over 1500 Club Members!

Poppy has been visiting since Kimbrose opened. She has the important role of giving emotional support to both Club Members and staff. Therefore, it was only right she was given 'The Employee of the Decade' award!



# Upcoming Events



3rd May	Mel Lewis	Singer and Pianist
9th May	Tulip, Daffodil & Baby	Guinea Pig Party
13th May	Poppy	Pet Therapy
19th May	Sue	Musical Movement
20th May	Bex	Musician
26th May	Alice Tribe	Singer
10th June	Carole & Malcolm	Singers
15th June	Phoebe Appleby	Singer
20th June	Richie C	Singer
24th June	Zoolab	Exotic Animal Encounter
28th June	Poppy	Pet Therapy



## Kimbrose 10th Anniversary Garden Party

**5th July 1.30 - 3.30pm**

Members, families and friends are invited to join us in the celebration. Alice Tribe will be entertaining us and there will be a raffle and refreshments.

Please let us know in advance if you are able to come.

# Noticeboard



## **BATHING SERVICE**

We are pleased to let you know our bathing service is up and running again. If you would like to book, or for more information, please get in touch.

## **RAFFLE PRIZES DONATIONS**

In July we will be having a garden party for all our Club Members and their families. We will be holding a raffle, so would really appreciate any donations of prizes.

## **POST CARD REQUEST**

We thought it would be nice to see how far everyone has travelled this year. So please would Club Members and families bring us a postcard back from your holidays. Its also encourages Members to reminisce about their travels in the past.

## **COFFEE NO.76**

We are pleased to announce the GCT coffee shop is now open. You will find us at 76 London Road, previously The York public house.

Please drop in and try our delicious coffee and cakes and look out for exclusive offers for our Club Members.

## **AD HOC ADDITIONAL SESSIONS**

We always try to accommodate requests for additional sessions to cover family commitments etc. We would ask that in future you pay for these extra hours in advance, or on the day, by cash, cheque or a one off BACS payment. Thank you.

## **FEEDBACK**

If you would like some feedback on how your loved one is getting on at Kimbrose, please get in touch. We can arrange either a face to face or a telephone meeting with a member of the team.

# Word Search

## BOOK TITLES



C C I Y X F H F A U S T M M  
I M H P E R S U A S I O N I  
N E E M X A Q R E A H Q D D  
D T I A E N Y E G T P C I D  
E A D T B K P B I O O A S L  
R M I I W E Y E V N L R G E  
E O W L D N G C A E L R R M  
L R U D R S M C N M Y I A A  
L P L A A T A A H E A E C R  
A H Y C C E L E O N N O E C  
N O S Z U I I M E T N Q E H  
D S S A L N O M Q Q A B Y V  
Q I E M A K N A L O L I T A  
F S S S T E P P E N W O L F

Metamorphosis

Heidi

Middlemarch

Emma

Dracula

Ivanhoe

Pygmalion

Lolita

Disgrace

Rebecca

Steppenwolf

Carrie

Ulysses

Cinderella

Frankenstein

Matilda

Pollyanna

Persuasion

Atonement

Faust